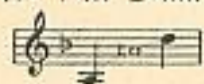


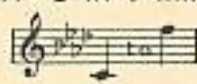
Nº 1 in D min.



Nº 2 in E min.



Nº 3 in F min.



Nº 4 in G min.



A Japanese Love Song

THE WORDS BY
MADGE DICKSON

The Music by
May H. Brahe

By the same Composer:
DOWN HERE..... E^b (B^b to Dora E^b) F.G
Sung by MADAME CLARA BUTT.
AS I WENT A-ROAMING..... G (B to C) A^b.B^b
OH TO BE IN ENGLAND! AND } MEDIUM & HIGH
THE YEAR'S AT THE SPRING }

Copyright.

London
ENOCH & SONS [1927] LTD
19, Hanover Square, W.1.

U.S.A. & CANADA:
BOOSEY & CO LTD

PARIS:
ENOCH & Co

Copyright, MCMX, by Allan & Co Pty Ltd, Melbourne.

PRINTED IN ENGLAND.

A Japanese Love Song.

The wind is gently sighing
Through the maple trees,
The tall bamboos are swaying
Softly in the breeze;
And as I sadly listen,
Listen dreamily,
I think I hear you singing,
Singing, love, to me.

I know it is but fancy
That I feel you near,
But oh, I'm filled with longing
Your dear voice to hear;
And oft the evening breezes,
Almond scented, bring
The rippling of your koto*,
And I hear you sing.

Madge Dickson.

*A musical instrument.

A Japanese Love Song.

Words by
MADGE DICKSON.

Music by
MAY H. BRAHE.

Moderato.

PIANO.

The

dim. e rall. *ppp a tempo* *sempre arpeggiato*

wind is gent - ly sigh - ing Through the ma - ple trees, The

tall bam-boos are sway - ing Soft - ly in the breeze; And

as I sad-ly list - en, List - en dream - i - ly, I think I hear you

tenuto

ten.

ten.

sing - ing, Sing - ing, love, to me.

rall.

a tempo

rall.

pp

ppp

I know it is but fan - cy That I feel you

a tempo

sempre arpeggiato

near, But oh, I'm filled with long - ing Your dear voice to

appassionato

rall.

rall.

dim. *tenuto*

hear; And oft the eve-ning breez - es, Al-mond scent - ed, bring The

dim. *ten.*

rip - pling of your ko - to,* And I hear you sing,

ff molto rall. *f gradually slower and softer*

And I hear you sing, Ah,

ff colla voce ff *molto rall.* *ff* *f colla voce.*

pp rall. molto *ppp*

Ah,

morendo *colla voce* *ppp* *ppp*

*A musical instrument.